

A NEW TAPEWORM CALYCOBOTHRIUM JADHAVAE FROM MARINE FISH *TRYGON SEPHEN*

Dr. Nilima Madhukarrao Kankale

Assistant Professor, Department of Zoology,
Ghulam Nabi Azad College of Arts, Commerce and Science,
Barshitakli, Dist. Akola, (M.S.) India

Abstract: The present paper deals with the new species of the cestode from the genus calycobothrium Southwell, 1911, Viz Calycobothrium Jadhavae n. sp. collected from Ratnagiri, west coast of India, from marine fish *Trygon sephen* cuvier. The present species differs from all other known species of the genus in having scolex globular or oval, a central dome like anterior portion bearing nine hallow, unbranched, finger or sucker like tentacles, mature segments longer than broad, testes oval in shape, pre-ovarian, 4 to 5 in numbers, ovary bilobed, 'U' shaped and genital pores regularly alternate.

Keywords: Marine fish cestode, Trygon & Calycobothrium

INTRODUCTION

The genus Calycobothrium was erected by Southwell ⁽¹⁾ in 1911 with its type Species C. typicum from Aetobatis harinari at Ceylon. Later on no species is added to this genus.

MATERIALS & METHODS

The worms were collected from Ratnagiri, west coast of India from marine fish *Trygon sephen* fixed in 4 % formalin, stained with Haris haematoxyline dehydrated, cleared in xylene, mounted in D.P.X. Drawings were made with the aid of camera lucida identification was carried out with the help of Systema Helminthum Vol II yamaguti , all measurements were in millimeters.

DESCRIPTION (BASED ON NINE SPECIMEN)

The worms were collected from the spiral valve of *Trygon sephen* (Cuvier, 1871) at Ratnagiri West Coast of India. The worms were highly muscular and thick, Scolex almost globular in shape measured 0.1649 (0.1164-0.2135) in length & 0.4173 (0.873 - .3300) in breadth. Central domes like anterior portion bearing nine hallow, unbranched, finger or sucker like tentacles measured 0.719 (0.1281-0.7251) in length & 0.319 (0.4251-0.5219) in breadth.

At the four corners of the scolex bearing four small, rounded suckers were present measured 0.2548 (0.2427 - 0.2669) in length & 0.1213 (0.09708 - 0.1456) in breadth.

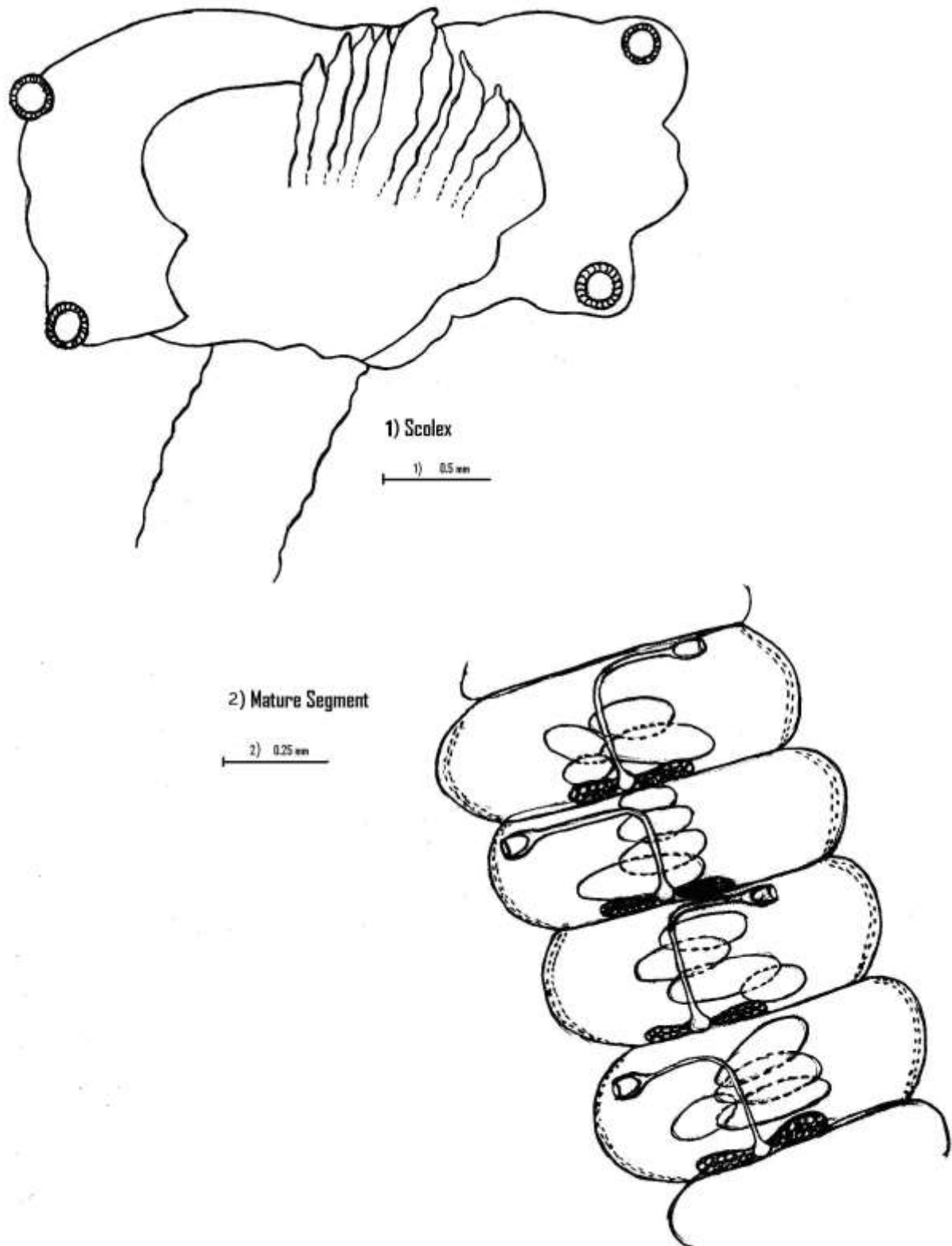
Scolex was followed by short neck, cylindrical in shape measured 0.7047 (0.9281 - 0.7766) in length & 0.597 (0.4854 - 0.5339) in breadth.

The mature segments were longer than broad measured 0.3219 (0.2651 - 0.3787) in length & 0.794 (0.9847 - .1741) in breadth.

Testes were preovarian, oval in shape, 4-5 in number measured 0.346 (0.3030 - 0.3787) in length & 0.757 (0.3787-0.1136) in breadth. The cirrus pouch was oval in shape, placed near the anterior side of the segment, obliquely placed measured 0.1325 (0.1136 - 0.1515) in length & 0.1136 (0.3787 - 0.07575) in breadth.

The cirrus was thin & straight contained with in the cirrus pouch measured 0.1325 (0.1136 - 0.1515) in length & 0.2271 (0.07575 - 0.09090) in breadth, vas deferens was short & curve, ovary is bilobed, compact, transversely placed measured 0.8332 (0.07575 - 0.9090) in length & 0.1136 (0.07575 - 0.01515) in breadth. Vitellaria follicular in one row.

The Genital pore was oval in shape, placed marginally & arranged alternately measured 0.946 (0.7575 - 0.1136) in length & 0.3044 in breadth, vagina was a thin tube, runs posteriorly to the cirrus pouch, measured 0.3598 (0.3030 - 0.4166) in length & 0.3029 (0.02272 - 0.03787) in breadth.

Figure:- *Calycobothrium Jadhavae* n.sp.

DISCUSSION

From *C. typicum*, which is having scolex circular in shape, 14 hollow, unbranched, sucker like tentacles, centrally placed. Testes numerous, cirrus pouch across proglottids, genital pore irregularly alternate. Ovary compact, vagina anterior to cirrus pouch.

As discussed, the present form *C. Jadhavae* differs from the earlier known species *C. typicum*, Southwell, 1911 in the shape of the scolex (globular Vs circular) in the number of tentacles (Nine Vs fourteen), in the number of testes (4 to 5 Vs numerous), position of vagina (posterior to cirrus pouch Vs anterior to cirrus pouch), from the shape of the ovary (bilobed Vs compact).

Key to the Species of the genus calycobothrium Southwell, 1911:

Globular scolex with tentacles below ten – C. jadhavae n.sp.

Circular scolex with tentacles above ten – C. typicum, Southwell, 1911.

Reference:

[1]. Southwell, 1911. On a new species of the genus Calycobothrium with its type Species C.typicum from Aetobatis harinari at Ceylon, I bid Part V. 216-225.

