

WOMEN SECURITY ANDROID APPLICATION

¹PROF. S. B. Farande, ²Snehal S Bhanase, ³Pranav P Gidde, ⁴Kshitija S Chavan, ⁵Siddhesh s Godhade

¹Professor, ^{2,3,4,5}Student

Dept. CSE

Dr. J. J. Magdum College of Engineering

Jaysingpur Maharashtra, India

Abstract- In today's world Victimization sensible phones having multiplied chop-chop and thence sensible phone may be used expeditiously for private security. A bunch of latest apps are developed to produce a security system to girls via their phones. per the reports of World Health Organization NCRB Social Government Organization thirty-fifth girls everywhere the planet square measure facing a great deal of unethical Physical Harassment publicly places like Railways, Bus stands and pathway, etc. during this Paper, we've got reviewed of assorted existing systems on women security. we've got fade a requirement of advanced girls security system to provides the safety live publicly places likewise as travelling alone through public transports such as college Buses, Company Vehicles etc. This paper projected a brand new model for the women security publicly places that aims to produce the 100% safe setting. Hence, GSM is most popularly-liked for this mode of dominant in this application we square measure maintaining a switch. We offer numerous varieties of ways to access

INTRODUCTION:

Crime control, public security especially women security are serious concerns for any country around the world. Police and various intelligence agencies constantly work for the same. Despite constant efforts, patrolling and using different types of technologies, equipment and methods like CCTV surveillance regularly, aerial inspection through simple camera drones (for serious cases) to control the crime, a significant change could not be observed. Moreover, Women protection is still a serious issue in various countries like India. Gender ideologies in India have seen an improving sign among all people within the society in upbringing the social status of women in different workplaces and environments but the status of women security

Remains the same or has been worsened. So we develop a System who find the safest path for the women while she is going outdoors alone. And also we provide safety to that women when she is in the trouble or in the helpless condition, she can also notify the situation to the family members or to the nearest police stations. In the present scenario, women are keeping pace with men in every walk of life but unfortunately at cost of being subjected to abuse, harassment, and violence in public and even at their own houses. They cannot step out of their houses at any time of the day, cannot wear clothes as per their will, nor can they even go for work in peace. There is some kind of inhibition that women are subjected to which not only takes away their sense of freedom but also shatters their confidence and dreams. Women who feel helpless and facing social challenges can use this system. Woman Safety Program would provide a women to predict a safe place at a given time and could place a SMS alert to the nearest Police department. The program would give the SMS alert to the Police Authorities with the geographical location. Any women / girl can use this system.

LITURATURE SERVE

Author: prottaasha Ghosh, Tanjim Masroor Bhuiyan (2022)

paper Title: Mart security Device for Women Based on IOT using Rasberry Pi It is often not feasible for users to take action on mobile app due to fear or shock.so , as long as the app is not equipped with sensor functioning , it doesn't make any sense

Author: Rubaiat Khan, Nagib Mahfuz (2021)

paper Title : A Novel Approach of Women Safety Assistant Device With Biometric Verification in Real Scenario It is often not feasible for users to take action on mobile app due to fear or shock.so , as long as the app is not equipped with sensor functioning , it doesn't make any sense.

Author: Z.M Tahmidulkaebir, AI Mamun Mizan (2020)

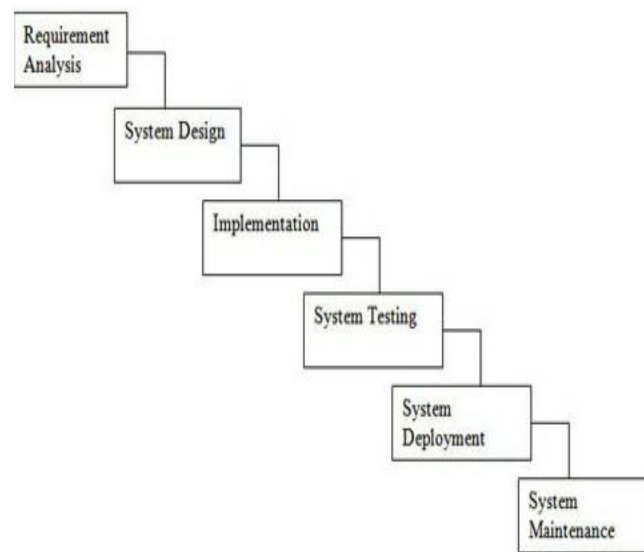
Paper title: Safety solution foe women using smart band and CWS app.it instantly informs the concerned people about the incident, but the rescue process takes time,so it solves he problem halfway.

METHODOLOGY:

The SDLC model is a classical model used in system development life cycle to create a system with a linear and sequential approach. It is termed as waterfall because the model develops systematically from one phase to another in a downward fashion. An effective System Development Life Cycle (SDLC) should result in a high quality system that meets customer expectations, reaches completion within time and cost evaluations, and works effectively and efficiently in the current and planned in formation Technology infrastructure. System Development Life Cycle (SDLC) is a conceptual model which includes policies and procedures for developing or altering systems throughout their life cycles. SDLC is used by analysts to develop an information system. SDLC includes the following activities

- Requirements

- Design
- Implementation
- Testing
- Deployment
- Operations
- Maintenance



Problem Definition:

To make women safe, we proposed safety device having sensors which when activated sends an alert message with current location to the selected contacts.

Techniques To Be Used

1. Speecher Class: You may turn your text into voice on Android. You can speak

Text in a variety of languages in addition to being able to convert it. For this, Android has the TextToSpeech class.

You must specify the `initListener` when creating an object of this type in order to use it.

2. Location Permissions:

You must include the location permission in your application if you want to be able to retrieve your user's current location.

Android offers the following location permissions:

ACCESS_FINE_LOCATION: This pinpoints your precise location using your GPS, Wi-Fi, and mobile data. If you use this, you will get the precise position of your user.

ACCESS_COARSE_LOCATION: By incorporating this into your application, you may locate the device's location using mobile cell data or WIFI (or both). This permission allows for an approximate value that is close to city level.

ACCESS_BACKGROUND_LOCATION: This capability was added in Android 10. Therefore, for Android 10 or higher, you must also enable the ACCESS_BACKGROUND option if you want to access the user's location in the background.

Firebase auth:

Using Firebase auth used authentication Google map and Google services library for location.

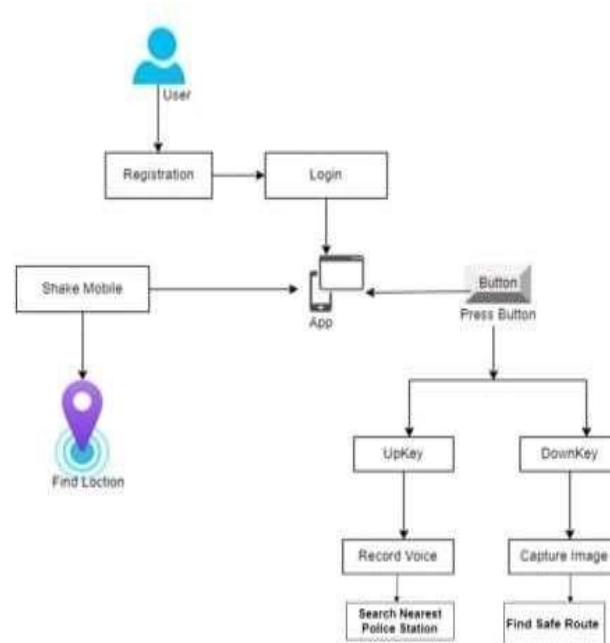
K-NN Algorithm:

Using K-NN algorithm it shows the nearest police station name and address to the user.

Hash Set:

Hash set show safety route using hash set collection framework.

3.3 System Architecture



RESULT:

Implementation tools & module developed

Android:

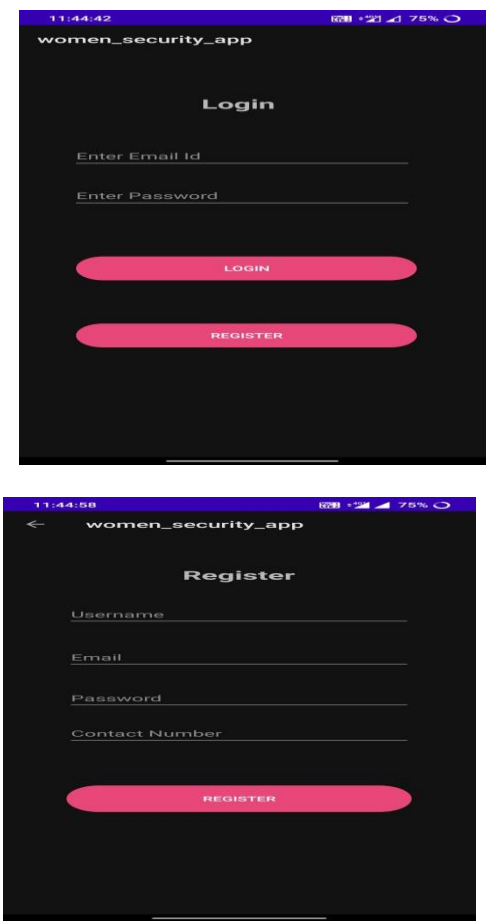
Is a complete set of software for mobile devices such as tablet Computers, notebooks, smartphones, electronics book reader, set-top-boxes etc. It contains Linux –based operating system, middleware and key mobile application. It can be thought of as a mobile operating system. But it is not limited to mobile only. It is currently used in various devices such as mobile, tablets, television etc. Android is a complete set of software for mobile devices. Such as tablet computers, notebooks, smartphones, electronics book reader ,set –top boxes etc.

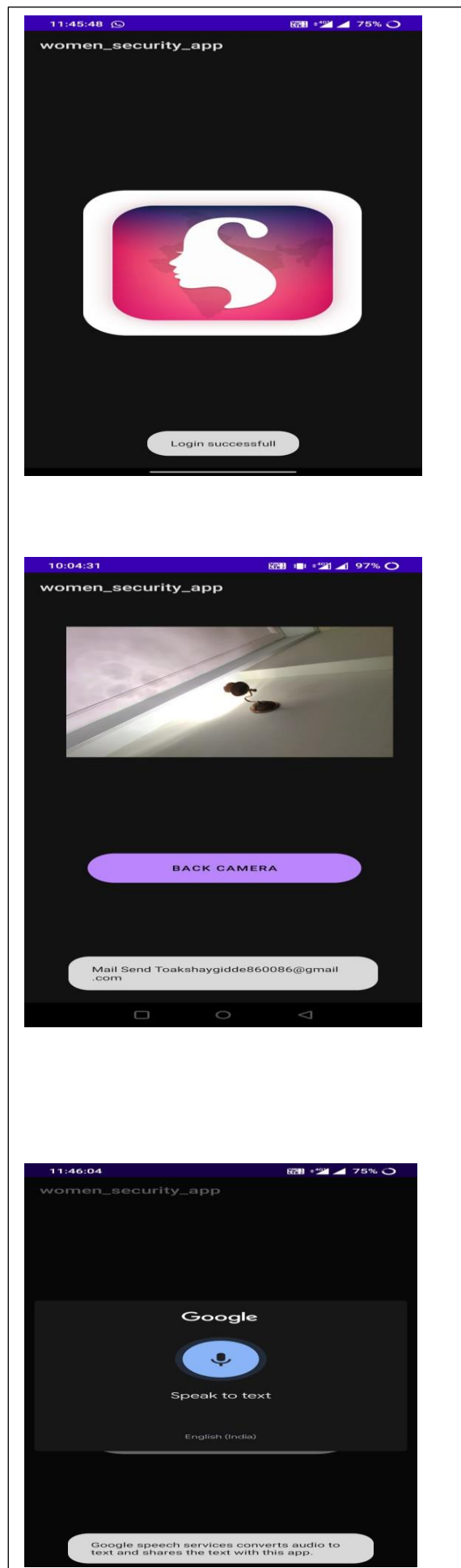
Kotlin:

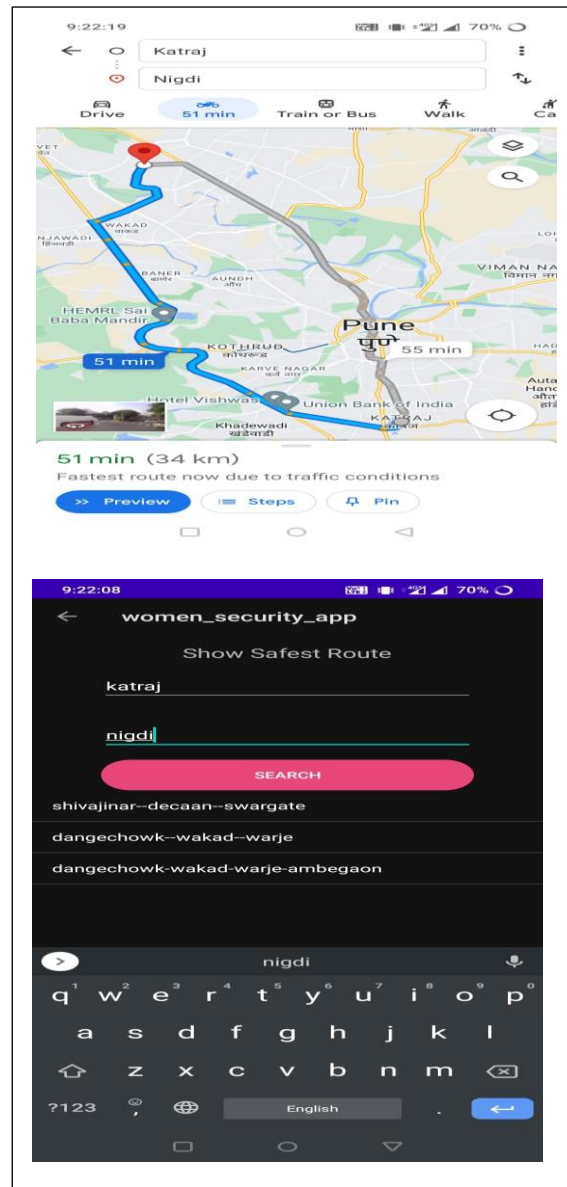
Kotlin tutorial provides basic and advanced concept of kotlin Programming language. Out kotlin provides design for beginners to the professionals both. Kotlin is a statically typed General purpose programming language. It is widely used to develop android application. Our kotlin tutorial includes all topics of kotlin such as introduction, architecture, class and object.

MYSQL:

MySQL is a currently most popular database management system software used for managing the relational database. It is open source database software which is supported by Oracle Company. It is fast, scalable, and easy to use database management system in comparisons with Microsoft SQL server and oracle database. It is commonly used I conjunction server side or web-based enterprise application.







Modules developed:

1. Login:

The security or authentication credentials that are used to access the Website and/or the Software (where applicable) that may include a username, password and related account information. Login Information means a specific user ID, email address or other login information, such as a password.

2. Registration:

A signup page (also known as a registration page) enables users and organizations to independently register and gain access to your system. It is common to have multiple signup pages depending on the types of people and organizations you want to register.

Button Press Button:

1. **Up Key:** Voice record (Speech to text).
Search nearest police station
2. **DownKey:** Capture Image
Find safe route

Hardware and Software Requirements

SOFTWARE REQUIREMENT

Operating System: Windows 10

IDE: Android Studio

Programming Language: Java

Database: MySQL

HARDWARE REQUIREMENT

System: Intel I3 Processor.

Hard Disk: 20 GB
 Monitor: 15 VGA Color.
 Mouse: Logitech.
 RAM: 4GB

Conclusion:

This project about the existing safety application for women and children and comes out with idea for making safe environment for women in the society, and allows them to go anywhere fear free. And it helps reducing the crime rate against the women.

REFERENCES:

1. Ye Zhang, Asif Ali Laghari, Muhammad, Rizwan Asif "Image processing based Proposed Drone For detecting and controlling street Crimes" 2017 IEEE 17th International Conference on Communication Technology (ICCT), 27-30 Oct. 2017
2. Singh, Devendra Patil, S.N. Omkar "Eye in the Sky: Real-Time Drone Surveillance System (DSS) for violent Individuals Identification using Scatter Net Hybrid Deep Learning Network" 2018 IEEE/CVF Conference on Computer Vision and Pattern Recognition Workshops (CVPRW), 18-22 June 2018.
3. Margherita Bonetto, Pavel Korshunov, Giovanni Ramponi, Touraj Ebrahimi "Privacy in Mini-Drone based video surveillance" 2015 IEEE International Conference on Image Processing (ICP), 27-30 Sept. 2015.
4. Ya-ching Chang, Hua-Tsung Chen, Jen-Hui Chuang, I-Chun Liao "Pedestrian Detection in Aerial Image using Vanishing Point Transformation and Deep Learning" 2018 25th IEEE International Conference on Image Processing (ICIP), 7-10 Oct. 2018.
5. Sunyoung Cho, Dae Hoe Kim, Yong Woon Park "Learning drone control actions in Surveillance videos" 2017 17th International conference on Control, Automation and Systems (ICCAS), 18-21 Oct. 2017.
6. Nirbhaya: Be Fearless: <http://www.nirbhaya.mobi>. Accessed 2015-06-01. International Labour Organization, 2012, "ILO Global Estimate of Forced Labour: Results and Methodology," p. 14, Geneva.
7. F. Vanderschueren, 2000, "The Prevention of Urban Crime." Paper presented at the Africities 2000 Summit, Windhoek, Namibia. Cited in UN-HABITAT, College Short Form Name, Department of Computer Engineering 2022 38
8. 2006, State of the World's Cities 2006/2007, p. 144, Nairobi.
9. James Martin. 1991. Rapid Application Development. Macmillan Publishing Co., Inc., Indianapolis, IN, USA.