

# Pharmacognosy, Phytochemistry & Pharmacological activities of *Butea monosperma*

<sup>1</sup>Ramakrishna.S, <sup>2</sup>Manasa K

<sup>1</sup>Associate prof & H.O.D of Pharmacognosy, <sup>2</sup>U.G scholar  
Varadaraja Institute of Pharmaceutical Education & Research, Tumkur  
Corresponding Author: **Ramakrishna,S**

**Abstract-** The primary goal of this review is to gather knowledge about *Butea monosperma*. The review information made available by this research is useful for expanding the possible use of *Butea monosperma*, which may contribute a substantial lead molecule.

**Key words-** *Butea monosperma*, Leguminosae, Polyphenols, Terpenes & Flavonoids.

## Introduction:

*BM*(*BUTEA MONOSPERMA*), sometimes known as the flame tree, belongs to the subfamily Caesalpinioideae of the family Fabaceae (previously Leguminosae). In India, the plant is known as the Palash tree. It is found throughout India and the South Asian peninsula [1]. It is a deciduous tree of medium size. It can reach a height of 10-15 meters. Because of the greater branching, it appears to be a little shrub when it grows to a height of 1-2 meters. Its bloom is odorless and appears scarlet throughout the spring blossoming season, and its leaves are trifoliate. The plant has several Pharmacological activities such as appetizer, laxative, anthelmintic, and aphrodisiac, among others. Plant parts such as flower, gum, seed, leaf, and bark [2-9] may be used. According to Ayurveda, *BM* can also help to balance Kapha and Vata [10]. Butein, butrin, flavonoid and steroids (flower), glucose, glycosides (roots), tannin (gum), oil, proteinase and polypeptidase (seed), and other active ingredients are found in various regions of *BUTEA MONOSPERMA*. The current article discusses the phytochemical and pharmacological activities of several sections of the *BUTEA MONOSPERMA*.

*BM*(monosperma):

*BM*(*BUTEA MONOSPERMA*), often known as the flame tree, belongs to the Caesalpinioideae subfamily of the Fabaceae (previously Leguminosae). In India, the plant is known as the Palash tree. It is found throughout India and the South Asian peninsula [1]. It is a deciduous tree of medium size. It can reach a height of 10-15 meters. Because of the greater branching, it appears to be a little shrub when it grows to a height of 1-2 meters. Its bloom is odorless and appears scarlet throughout the spring blossoming season, and its leaves are trifoliate. The plant has several medical characteristics such as appetizer, laxative, anthelmintic, and aphrodisiac, among others. Plant parts such as flower, gum, seed, leaf, and bark [2-9] may be used. According to Ayurveda, *BM* also has the ability to reduce Kapha and Vata [10]. Butein, butrin, flavonoid and steroids (flower), glucose, glycosides (roots), tannin (gum), oil, proteinase and polypeptidase (seed), and other active ingredients are found in various regions of *BUTEA MONOSPERMA*. The current article discusses the phytochemical and pharmacological activities of several sections of the *BUTEA MONOSPERMA*.

## Taxonomic classification

Kingdom: Plantae  
Domin: Eukaryote  
Phylum: Tracheophyta  
Family: Fabaceae  
Sub-family: Faboideae  
Order: Fabales  
Genus: *Butea*  
Species: *B. Monosperma*  
Class: Dicotyledons

## Geographical Source:

*BM* is a species of *Butea* native to tropical and sub-tropical parts of South Asia and Southeast Asia, ranging across Bangladesh, India, Nepal, Pakistan, Sri Lanka, Myanmar, Thailand, Laos, Cambodia, Vietnam, Malaysia, and western Indonesia.

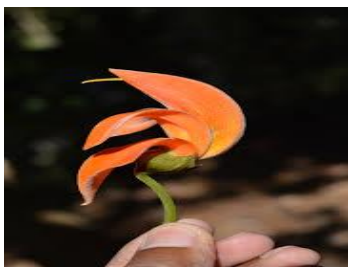
## Ayurvedic context of *Butea monosperma*

As a medicinal plant used in Ayurvedic medicine, *BM* has a significant impact. The particular epithet monosperma means "one seeded" and refers to the fruit of the Fabaceae family containing a single seed towards its apex [11]. Palash was the name given to *BM* after an extensive analysis of Ayurveda. Charaka Samhita, Susruta Samhita, Astanga Sangraha, Astanga Hridaya Vedas, and Upanisads all describe it in detail. The plant is defined in Mahakasaya [12] of the Charaka Samhita. Palash is classified as Ambasthadi, Nyagrodhadi, Muskakadi, and Rodhradi in the Susruta Samhita. Palash is also mentioned in Ambasthadi, Muskakadi, Nyagrodhadi Gana, and Rodhradi in Astanga Hridaya and Susruta Samhita. Vagbhata mentioned Palash in Asanadi,

Rodhradi, Muskakadi, Ambasthadi, and Nyagrodhadi Gana in Astanga Sangraha.. Palash is also described in depth in the Samhitas Harita, Bhela, Sharangadhar, and Kasyapa. Cikitsagranthas refer to it as Gadanigraha, Bhaishajya Ratnavali, Bhavaprakasha Samhita, and Cakradutta. The goodness of Palash has been defined by Nighantus in many diseases, for example, the rasa of Palash is useful in kasaya and tikta. The fruit section of the *BUTEA MONOSPERMA*, according to Bhavaprakash Nighantu, is relevant in the Krimi, Arsa, and Vatakaphaja rogas.

#### Morphological characters and phytochemistry

##### Flower:



Colour: Bright orange red , rarely yellow.

Odour: Odour less.

Shape: Usually branch lets, wings and keel recurved

Size: 5 to 40 centimeter long , 4 short lobes, corolla 5 to 7 centimeter long

##### Chemical Constituents:

It contains triterpene butrin, isobutrin, coreopsin, sulphurein, isocoreopsin, monospermoside and chalcones, isomonospermoside, aurones, steroids and flavonoids. Glycoside of the *BM* contains 5,7-dihydroxy -3,6,4-trimethoxy flavone-7ss-O- $\alpha$ -L xylopyranosyl (1 $\rightarrow$ 3)-O- $\alpha$ -L-arabinopyranosyl-(1 $\rightarrow$ 4)-O- $\beta$ -D galacto pyranoside [14,15].

##### Gum:

Gum contains mucilaginous material, pyrocatechin and tannins [16].

##### Seeds:



Colour: Brown

Shape and size: Seed ellipsoid, flattened, about 3 cm long.

##### Chemical constituents: :

Oil contains polypeptidase, lypolytic enzymes, proteinase and proteolytic [16]. Palasonin and nitrogenous acidic compounds is present in seeds. Seed also contains isomonospermoside, monospermoside and allophanic acid. Flavone glycoside present in the seeds of *BM* which possess potential antiviral activity [17]. *BM* seeds contain fixed oil, mixed fatty acids, and unsaponifiable matter [18].

##### Resin:

Resin contains jalaric esters I, II and laccijalaric esters III, IV  $\alpha$  amyirin,  $\beta$ -sitosterone its glucoside and sucrose; lactone-nheneicosanoic acid- $\delta$ -lactone [19].

##### Saponin:

Saponin contains butein, butin, butrin, colourless isomeric flavanone and chalcones [20].

##### Leaves:



Colour: Dark green

Shape and size: Leaves trifoliate; petiole 7.5-20 cm long with small stipules; leaflets more or less leathery, lateral ones obliquely ovate, terminal one rhomboid- obovate, 12-27 x 10-26 cm, obtuse, rounded or emarginate at apex, rounded to cuneate at base, with 7-8 pairs of lateral veins, stipellate.

Shape and size: Leaves trifoliate; petiole 7.5-20 cm long with small stipules; leaflets more or less leathery, lateral ones obliquely ovate, terminal one rhomboid- obovate, 12-27 x 10-26 cm, obtuse, rounded or emarginate at apex, rounded to cuneate at base, with 7-8 pairs of lateral veins, stipellate.

**Chemical constituents:**

Leaves contain kino-oil containing oleic, linoleic acid, lignoceric acid and palmitic [21].

Leaves contain kino-oil containing oleic, linoleic acid, lignoceric acid and palmitic [21].

**Bark:**



Colour: Greyish Brown

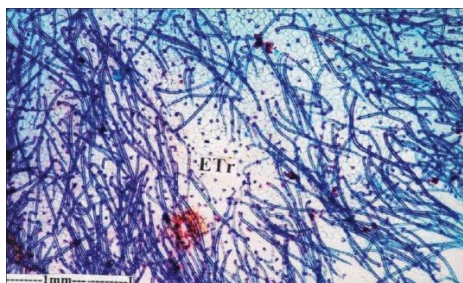
Size: 5 to 15 meters tall, upto 43 centimeter dbh.

**Chemical constituents:**

Barks contain gallic acid, kino-tannic acid, pyrocatechin. Barks also contain allophanic acid, butolic acid, shellolic acid, butrin, alanin, palasitrin, cyanidin, histidine, palasimide and miroestrol [21,22]. Isolation from stem bark methanolic extract of *BM* gives two structurally related methoxyisoflavones; cajanin and isoformononetin [23]. The phytochemical investigation and isolation of the stem bark of *BM* contain following compounds such as buteaspermin A, buteaspermin B and buteasperminol, medicarpin, cajanin, formonentin, isoformonentin and cladrin [24]. The active constituent obtained from ethyl acetate and petroleum extracts of the stem bark of *BM* was medicarpin [25].

**MICROSCOPY OF BUTEA MONOSPREMA**

**Epidermal trichomes**

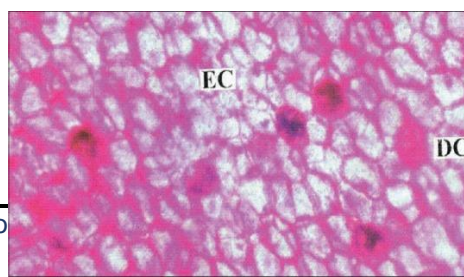


multicellular appendages that grow from above-ground epidermal cells in plants. These appendages serve an important function in plant development and are seen in a wide range of species.



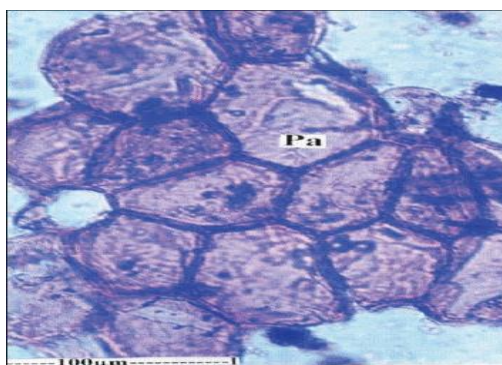
**Nonglandular trichomes:**

Second type of trichomes which are short and unicellular

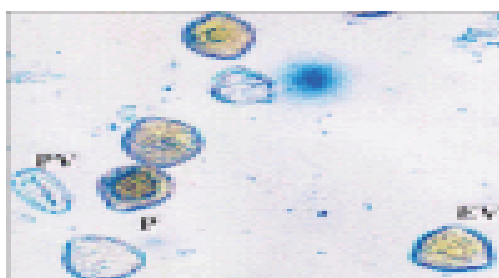


**Epidermal cells:**

An outer thick pectinaceous layer with a few cellulose microfibrils and an inner mainly cellulosic layer.

**Parenchyma cells:**

Parenchyma is integral to vascular tissue, where it provides a route of exchange for materials within and between the xylem and the phloem.

**Pollen grains:**

The interior section of pollen grain contains cytoplasm along with the tube cell, which converts into a pollen tube and the generative cell releases the sperm nuclei.

**Phyto constituents of *Butea monosperma***

Flowers- [a] Triterpene : butrin, isobutrin, coreopsin, sulphurein, isocoreopsin, monospermoside, chal- cones, isomonospermoside, steroids.

[b] Glycoside : -5,7-dihydroxy -3,6,4-trimethoxy flavone-7-O- $\alpha$ -L xylopyranosyl  
(1 $\rightarrow$ 3)-O- $\alpha$ -L- arabinopyranosyl-(1 $\rightarrow$ 4)-O- $\beta$ -D galacto pyranoside.

Gum : Tannins : Mucilaginous material, pyrocatechin

Seed : Enzymes: Polypeptidase, lipolytic enzymes, proteinase and proteolytic enzymes

Resin :Esters : Jalaric esters I, II and laccijalaric esters III, IV  $\alpha$  amyrrin.

Saponin : polyphenols : Chalcones, butein, butin

Leaves : Fatty acid: Kino-oil containing oleic, linoleic acid, lignoceric acid.

Bark :Amino acids : Allophanic acid, butolic acid, shellolic acid, butrin, alanind, palasitrin, cyanidin, histidine

Stem :Steroids : Stigmasterol- $\beta$ -D-glucopyranoside and nonacosanoic acid

**Pharmacological Activities:****Anti-filarial:**

Aqueous extract of *BM* effectively decreased the motility of microfilariae (*Brugia malayi*). This impact was dosage dependant, with an IC50 value of 83ng/ml [26].

**Anti-Diabetes:**

Alloxan was used to cause diabetes in male rats. An ethanolic extract of *BM* leaves administered orally shown anti-diabetic effects. *BM* extract dramatically lowers blood glucose levels and increases antioxidant enzyme activities after 45 days of continuous therapy at 300mg/kg dosage, implying that *BM* leaves have strong antioxidant and hypoglycemic effects [27,28].

**Anti-inflammatory and anti-oxidant activities:**

Various extracts of *BM* leaves demonstrated anti-inflammatory activity in human red blood cells (HRBC) membrane stabilizing technique. The petroleum ether and chloroform extracts were significantly anti-inflammatory, but the hexane, ethyl acetate, and ethanol extracts were somewhat antioxidant and anti-inflammatory [29,30].

**Flower:****Anticancer:**

An aqueous extract of *BM* demonstrated anticancer activity by accumulating cells in the G1 phase and limiting cell proliferation

with considerable activation of apoptotic cell death, implying that *BM* possesses anticancer qualities [31].

#### **Anticonvulsant:**

A petroleum ether extract of *BM* was column chromatographically fractionated with varied polarities such as ethyl acetate, n-hexane, and methanol. The fractionated petroleum extract of *BM* demonstrated anticonvulsant efficacy against seizures induced by maximal electroshock (MES), Pentylentetrazole (PTZ), and lithium sulfate-pilocarpine nitrate. Furthermore, triterpenes found in *BM* have antidepressant properties [32].

#### **Antihyperglycemic Activity**

A 50% ethanolic extract of *BM* flowers significantly prevents hyperglycemia in wistar rats that has been caused by alloxan. The potential ethanolic extract of *BUTEA MONOSPERMA*, which has antihyperglycemic and antioxidant properties, demonstrated antidiabetic activity by lowering levels of total cholesterol, triglycerides, and very low-density lipoprotein cholesterol [33].

#### **Antioxidant potential:**

An ethanolic extract of *BM* reversed the oxidative damage that diabetic mice's numerous organs, including the pancreas, liver, and kidneys, demonstrated by a notable increase in thiobarbituric acid level and a clear decrease in glutathione content. The inclusion of flavonoids, saponins, and sterols in *BM* may be responsible for its anti-diabetic and antioxidant properties [34].

#### **Antioxidant & Anti inflammatory :**

**Antioxidant and anti-inflammatory actions** The anti-inflammatory effects of the *BM* methanolic extract (600 mg/kg and 800 mg/kg) were dose-dependent. It prevented the paw edema and granuloma in the rat model of paw edema and granuloma caused by carrageenan [35]. This might be because *BM* contains a variety of polyphenols, including butrin, isobutrin, isocoreopsin, and butein [36].

#### **Anti mycobacterial Activity :**

Bioactive flavonoids found in *BM* flowers, including dihydromonosperoside, dihydrochalcone, monosperoside, isoliquiritigenin, and butein, have been shown to have antimycobacterial activity [37]. Its antifungal effect against different was found by the investigation.

#### **Anti microbial activity :**

The 5,7-dihydroxy-3,6,4-trimethoxy flavone has antimicrobial properties. 7,0,L xylopyranosyl (1,3),0,L arabinopyranosyl (1,4)Galactopyranoside-O-D exhibited antibacterial properties. The antibacterial property of *BM* seed oil is against harmful bacteria and fungus. The oil is therefore fungicidal and bactericidal [39].

#### **Antidopaminergic activity:**

A methanolic extract of *BM* containing isoflavones demonstrated antidopaminergic activity, inhibited foot shock-induced aggressiveness in rats, and enhanced the catalepsy in a dose dependent manner [40].

#### **Hepatoprotective effect :**

The hepatoprotective effect of *BM* flower aqueous extract was investigated in comparison to CCl<sub>4</sub> (1.5 ml/kg i.p.)-induced hepatotoxicity. Cirrhosis and necrosis of the liver can be brought on by CCl<sub>4</sub>. As a result, the treatment of CCl<sub>4</sub> had a significant impact on several physiological variables, including levels of albumin, protein, hepatic lipid peroxidation, reduced glutathione, and total protein. It has been confirmed that *BM* has, in a dose-dependent manner, corrected all changed biochemical parameters, including histological changes [41].

#### **Free radical scavenging activity:**

• Free radical scavenging effect: The 2,2 diphenyl-1-picrylhydrazyl (DPPH) radical, superoxide dismutase (SOD) assay, and the methanolic extract of the flower section of *BM* were used to evaluate the free radical scavenging effect. In addition, 2, 2' azo-bis (amid inopropane) dihydrochloride was used to assess the suppression of erythrocyte hemolysis. The activity may be due to the presence of polyphenols. [42].

#### **Seeds:**

##### **Hormone balancing effect:**

Alcoholic *BM* extract has anti-implantation and anti-estrogenic properties. However, active substances like butin, which also has male contraceptive qualities, are what cause the estrogenic action. Additionally, *BM* seed methanolic extracts have uterine peroxidase activities and antifertility effects [43].

##### **Anti-implantation activity:**

Butin is an active component of *BM* and has anti-implantation activity. At dosages of 5, 10, and 20 mg/rat, oral treatment of Butin exhibited anti-implantation action. During pregnancy termination, a dose-dependent response was observed. Additionally, a reduction in the number of implantation sites was seen at lower doses. Butin lacks antiestrogenic activity but has estrogenic activity at comparable anticonception levels as seen in young female rats with ovariectomies [44].

##### **Anthelmintic activity:**

*BM* seeds' methanolic extract has a sizable amount of anthelmintic activity against *Caenorhabditis elegans* [45]. This discovery is

highly supported by the anthelmintic activity against Trichostrongylid nematodes in sheep. The crude powder made from *BM* seeds that was extracted with methanol (1, 2 and 3 mg/kg) had an anthelmintic action. Dependence on both time and dose was shown [46]. Additionally, the extract from the same solvent has strong anthelmintic action.

**Anti-hyperlipidemic, anti-hyperglycemic, and anti-peroxidative effects:**

The ethanolic extract made from *BM* seeds has these properties. In non-insulin dependent diabetic (NIDDM) rats, the ethanolic extract administered for four weeks showed a strong antihyperglycemic effect with better glucose tolerance [47].

**Antiviral:**

Isolated flavone glycoside from the seeds may have antiviral effects.

**Antimicrobial activity :**

Antimicrobial action was demonstrated by medicarpin present in seed oil [48].

**Anti-inflammatory:** The evaluation of anti-inflammatory activity used the cotton pellet-induced granuloma and the carrageenin-induced paw oedema method. The study found that *BM* seed extract had potent anti-inflammatory effects when taken orally, which may be because the extract contains fixed oil, mixed fatty acids, and unsaponifiable materials [49].

**Bark:**

**Anti-diarrhoeal:** Castor oil-induced diarrhea and PGE<sub>2</sub>-induced enteropooling in rats may be prevented by consuming an ethanol extract of the bark and stem sections of *BUTEA MONOSPERMA*. Gastrointestinal motility was considerably decreased after oral administration of charcoal meal and *BM* extract [50].

**Wound Healing activity :**

Rats' wounds can be healed by *BM* bark ethanolic extract [51]. When applied topically to complete excision wounds formed on rats' backs, it sped up the healing process. At the wound infection site, the ethanolic extract of *BM* stimulated cellular proliferation and collagen formation. In an excision wound model, the extract accelerated wound contraction and sped up epithelialization while also boosting the area's hydroxyproline content, granulation tissue weight, and tensile strength [52].

**Osteogenic and osteoprotective activity:**

Cajanine, a compound isolated from the stem bark of *BUTEA MONOSPERMA*, has strong mitogenic and differentiation-promoting effects on osteoblasts. But it was discovered that isoformononetin has powerful anti-apoptotic and osteoblast differentiation-promoting properties [53]. The *BM* stem bark extract has osteogenic and osteoprotective properties [54].

**Antiinflammatory activity:**

The methanolic extract of the stem bark of *BM* showed analgesic and anti-inflammatory action against acetic acid induced writhing, hot plate test model and carrageenan induced paw edema in a dose dependent manner comparable to diclofenac sodium [55].

**Anti-stress:** Water soluble part of ethanolic extract of *BM* showed antistress effect. Ethanolic extract of *BM* decreases the elevated level of plasma corticosterone and brain serotonin and this anti-stress effect was comparable to that of diazepam [56].

**Effects on hormone level:**

Administration of Stigmasterol (2.6 mg/kg), isolated from the bark of methanolic extract of *BM* for 20 days in the experimental animals reduced serum triiodothyronine, thyroxine, and glucose concentrations with a concomitant increase in insulin. Moreover, there was significant increase. Following there was a significant increase in the levels of catalase, glutathione, and superoxidodismutase as well as a decrease in hepatic lipid peroxidation, indicating potential thyroid inhibitory and hypoglycemic effects of stigmasterol [57].

**Antifungal:**

Medicarpin demonstrated more antifungal action against *Cladosporium cladosporioides* than the common fungicide Benlate [58].

**Anti-ulcer:**

A 500 mg/kg methanolic extract of *BM* bark demonstrated 79.30 and 82.20% healing against ethanol and aspirin-induced stomach ulcerations, respectively, indicating the extract's ability to scavenge free radicals and have an anti-ulcer action [59].

**Fruits:**

**Hypoglycemic effect:**

After therapy (3g/30ml of water for 30 days), *BM* methanolic extract significantly decreased blood urine sugar, plasma glycoprotein, and glucose levels. Additionally, a decrease in lipid profile and a restoration of liver enzyme activity point to potential anti-diabetic actions of *BM* fruit extract [60]. In both normal and alloxan-induced diabetic rats, the study found that herbal formulations made of three plant parts—Piper betel, *Butea monosperma*, and *Trigonella foenum graecum*—have anti-diabetic potential [61,62].

**Antimicrobial and anti-fungal:**

Numerous *BM* fractions have been found to have potent antibacterial properties against a wide range of bacterial and fungal species [63,64].

**Antihelminthic effect:**

Pippali rasayana with *BM* extract was used to test its immunostimulatory and anti-giardia activity against *Giardia lamblia*, and nearly 98% of infected people recovered. In vitro research, however, demonstrated that Rasayana had no homicidal effect on the parasite despite the parasite's substantial activation of macrophages and elevated level of macrophage movement index. Phagocytic activity was also seen in *BM* extract (900 mg/kg). Furthermore, they gave the patients Pippali Rasayana orally in doses of 1g for a total of 15 days and observed that *Giardia lamblia* was completely absent from the patients.

**Traditional Uses in Ayurveda**

Sushruta Samhita, Charaka Samhita, and Ashtanga Hridaya, among other Ayurvedic texts, describe Palash as having numerous beneficial properties, making it a potent medicinal plant.

- These include anti-diarrheal, anthelmintic, anti-diabetic, anti-stress, hepatoprotective, antifungal, astringent, aphrodisiac, laxative, anti-inflammatory
- The tree's seeds act as a purgative and diuretic to increase urination.
- In the case of intestinal parasites, the seed powder is employed.
- The kino gum, produced from the bark of the palash tree, has astringent characteristics and is used to cure hemorrhoids.
- Has an inherent expectorant quality, meaning it can easily release any extra mucus or phlegm and eliminate it from the respiratory tract.
- When applied to sunburns and rashes, the extract from the leaves and blossoms calms the irritated and dried-out areas of the skin, leaving it smooth and totally moisturized.[65]

**DOSAGE**

Adults should take

- 1 to 2 teaspoons of Palash Churna with warm water and honey after meals in order to safely consume *BM* formulations each day.
- 10 – 20 ml of leaf juice
- 50 – 100 ml of bark decoction
- 3 – 6 grams of flower powder
- 3 – 6 grams of seed extracts
- 1 – 3 grams of gum resin.[65]

**Conclusion:**

It is well known that the phytochemicals in *Butea monosperma* exhibit vital pharmacological effects that show promise. This review can be used to find new therapeutic compounds with improved drug delivery system efficacy.

**REFERENCES:**

1. Shah GM., et al. "Observations on antifertility and abortifacient herbal drugs". African Journal of Biotechnology 8.9 (2009): 1959-1964.
2. Burli DA and Khade AB. "A comprehensive review on *Butea monosperma* (Lam.) Kuntze". Pharmacognosy Reviews 1.2 (2007): 333-337.
3. Upadhyay B., et al. "Ethno-veterinary uses and informants consensus factor of medicinal plants of Sariska region, Rajasthan, India". Journal of Ethnopharmacology 133.1 (2011): 14-25.
4. Gaikwad SR., et al. "Study of zooplankton emergence pattern and resting egg diversity of recently dried waterbodies in North Maharashtra Region". Journal of Environmental Biology 29.3 (2008): 353.
5. Katewa SS., et al. "Folk herbal medicines from tribal area of Rajasthan, India". Journal of Ethnopharmacology 92.1 (2004): 41-46.
6. Aher RK., et al. "Survey of medicinal plants from areas of Ahmednagar District (Maharashtra State)". Asian Journal of Microbiology Biotechnology and Environmental Sciences 6 (2004): 83-86.
7. Sikarwar RL and Kumar V. "Ethnoveterinary knowledge and practices prevalent among the tribals of central India". Journal of Natural Remedies 5.2 (2005): 147-152.
8. Tambekar DH and Khante BS. "Antibacterial properties of traditionally used medicinal plants for enteric infections by adivasi's (Bhumka) in Melghat forest (Amravati district)". International Journal of Pharmaceutical Sciences and Research 1 (2010): 120-128.
9. Jain A., et al. "Folk herbal medicines used in birth control and sexual diseases by tribals of southern Rajasthan, India". Journal of Ethnopharmacology 90.1 (2004): 171-177.
10. Srivastava M., et al. "Pharmacognostical evaluation of seed of *Butea monosperma* Kuntze". Natural Product Sciences 8.3 (2002): 83-89.
11. Neelam KN., et al. "A study on Palash (*Butea Monosperma* Lam. Kuntz.) with special reference to its role in Madhumeha (Diabetes Mellitus Type 2)". Journal of Medicinal Plants 5 (2017): 204-206.
12. Husain M. "Rasavaha srotas and their physiological importance: an ayurveda review". Journal of Drug Delivery and Therapeutics 8.5 (2018): 115-117.
13. Galib G., et al. "Tribulus terrestris Linn.: A phyto-pharmacological review". Journal of Ayurveda and Holistic Medicine (JAHM) 1.3 (2013): 37-43.
14. Kasture VS., et al. "Anticonvulsive activity of *Butea monosperma* flowers in laboratory animals". Pharmacology

- Biochemistry and Behavior 72.4 (2002): 965-972.
15. Surin WR and Ananthaswamy K. "Recent advances on the pharmacological profile of *Butea monosperma*". GEF Bulletin of Biosciences 2 (2011): 33-40.
  16. Shah KN., et al. "A phyto-pharmacological overview on Jewel Weed". Journal of Applied Pharmaceutical Science 7.8 (2017): 246-252.
  17. Yadava RN and Tiwari L. "Note: A potential antiviral flavone glycoside from the seeds of *Butea monosperma* O. Kuntze". Journal of Asian Natural Products Research 7.2 (2005): 185- 188.
  18. Gunakunru A., et al. "Chemical investigations and anti-inflammatory activity of fixed oil of *Butea monosperma* seeds". Natural Product Sciences 10.2 (2004): 55-58.
  19. Singh AN., et al. "Chemistry of lac resin—VI: Components of soft resin". Tetrahedron 30.7 (1974): 867-874.
  20. Lohitha P., et al. "Phytochemical screening and in vitro antimicrobial activity of *butea monosperma* (l) bark ethanolic and aqueous extract". International Journal of Pharmaceutical Sciences and Research 1.10 (2010): 150.
  21. Indurwade NH., et al. "Herbal plants with aphrodisiac activity". Indian Drugs 42.2 (2005):
  22. Burli DA., et al. "A comprehensive review on *Butea monosperma* (Lam.) Kuntze". Pharmacognosy Reviews 1.2 (2007): 333- 337.
  23. Pandey R., et al. "Total extract and standardized fraction from the stem bark of *Butea monosperma* have osteoprotective action: evidence for the nonestrogenic osteogenic effect of the standardized fraction". Menopause 17.3 (2010): 602-610.
  24. Tyagi AM., et al. "Medicarpin inhibits osteoclastogenesis and has nonestrogenic bone conserving effect in ovariectomized mice". Molecular and Cellular Endocrinology 1.2 (2010): 101- 109
  25. Gupta P., et al. "Phytochemical and pharmacological review on *Butea monosperma* (Palash)". International Journal of Agronomy and Plant Production 3.7 (2012): 255-258.
  26. Sahare KN., et al. "In vitro effect of four herbal plants on the motility of *Brugia malayi* microfilariae". Indian Journal of Medical Research 127.5 (2008): 467.
  27. More BH., et al. "Ethnobotany and Ethanopharmacology of *Butea Monosperma* (Lam) Kuntze-A Compressive Review". American Journal of Pharmtech Research 2. (2012): 138-159.
  28. Sharma AK and Deshwal N. "An overview: On phytochemical and pharmacological studies of *Butea monosperma*". International Journal of Pharmaceutical Sciences and Research 3. (2011): 864-867.
  29. Borkar VS., et al. "Evaluation of in vitro anti-inflammatory activity of leaves of *Butea monosperma*". Indian Drugs 47.6 (2010): 62-63.
  30. Borkar VS., et al. "In vitro evaluation of *Butea monosperma* Lam. for antioxidant activity". Oriental Journal of Chemistry 24. (2008): 753-755.
  31. Choedon T., et al. "Chemopreventive and anti-cancer properties of the aqueous extract of flowers of *Butea monosperma*". Journal of Ethnopharmacology 129.2 (2010): 208-213.
  32. Kasture VS., et al. "Anticonvulsive activity of *Albizia lebeck*, *Hibiscus rosa sinesis* and *Butea monosperma* in experimental animals". Journal of Ethnopharmacology 71.2 (2000):
  33. Somani R., et al. "Antidiabetic potential of *Butea monosperma* in rats". Fitoterapia 77.2 (2006): 86-90.
  34. Sharma N., et al. "Antihyperglycemic, antihyperlipidemic and antioxidative potential of *Prosopis cineraria* bark". Indian Journal of Clinical Biochemistry 25.2 (2010)
  35. Shahavi VM and Desai SK. "Anti-inflammatory activity of *Butea monosperma* flowers". Fitoterapia 79.2 (2008): 82-85.
  36. Rasheed Z., et al. "Butrin, isobutrin, and butein from medicinal plant *Butea monosperma* selectively inhibit nuclear factor- $\kappa$ B in activated human mast cells: Suppression of tumor necrosis factor- $\alpha$ , interleukin (IL)-6, and IL-8". Journal of Pharmacology and Experimental Therapeutics 333. 2 (2010): 354-363.
  37. Chokchaisiri R., et al. "Bioactive flavonoids of the flowers of *Butea monosperma*". Chemical and Pharmaceutical Bulletin 57.4 (2009): 428-432.
  38. Yadava RN and Tiwari L. "New antifungal flavone glycoside from *Butea monosperma* O. Kuntze". Journal of Enzyme Inhibition and Medicinal Chemistry 22.4 (2007)
  39. Gaurav SS., et al. "Antimicrobial activity of *Butea monosperma* Lam. Gum". Iranian Journal of Pharmacology and Therapeutics 7.1 (2008): 21.
  40. Velis H., et al. "Antidopaminergic activity of isoflavone isolated from *Butea monosperma* flowers". Planta Medica 1.1 (2008): 159-168.
  41. Sharma N and Shukla S. "Hepatoprotective potential of aqueous extract of *Butea monosperma* against CCl<sub>4</sub> induced damage in rats". Experimental and Toxicologic Pathology 63.7.8 (2011)
  42. Hasan SR., et al. "DPPH free radical scavenging activity of some Bangladeshi medicinal plants". Journal of Medicinal Plants Research 3.11 (2009): 875-879.
  43. Tiwari P and Sahu PK. "Plant's altering hormonal milieu: A review". Asian Pacific Journal of Reproduction 6.2 (2017): 49-53.
  44. Rana F and Avijit M. "Review on *Butea monosperma*". International Journal of Research in Pharmacy and Chemistry 2. (2012): 1035-1039.
  45. Prashanth D., et al. "Anthelmintic activity of *Butea monosperma*". Fitoterapia 72.4 (2001): 421-422. 0-46. Iqbal Z., et al. "In vivo anthelmintic activity of *Butea monosperma* against Trichostrongylid nematodes in sheep". Fitoterapia 77.2 (2006): 137-140.
  46. Bavarva JH., et al. "Preliminary study on antihyperglycemic and antihyperlipaemic effects of *Butea monosperma* in NIDDM rats". Fitoterapia 79.5 (2008): 328-331.



47. Sindhia VR and Bairwa R. "Plant review: Butea monosperma". International Journal of Pharmaceutical and Clinical Research 2.2 (2010): 90-94.
48. Gunakunru A., et al. "Chemical investigations and anti-inflammatory activity of fixed oil of Butea monosperma seeds". Natural Product Sciences 10.2 (2004): 55-58.
49. Gunakunru A., et al. "Anti-diarrhoeal activity of Butea monosperma in experimental animals". Journal of Ethnopharmacology 98.3 (2005): 241-244.
50. Sumitra M., et al. "Efficacy of Butea monosperma on dermal wound healing in rats". The international Journal of Biochemistry and Cell Biology 37.3 (2005): 566-573.
51. Gavimath CC., et al. "Evaluation of wound healing activity of Butea monosperma lam. Extracts on rats". Pharmacologyonline 2. (2009): 203-216.
52. Bhargavan B., et al. "Methoxylated isoflavones, cajanin and isoformononetin, have non-estrogenic bone forming effect via differential mitogen activated protein kinase (MAPK) signaling". Journal of Cellular Biochemistry 108.2 (2009): 388-399.
53. Maurya R., et al. "Osteogenic activity of constituents from Butea monosperma". Bioorganic and Medicinal Chemistry Letters 19.3 (2009): 610-613.
54. William CM and Krishna Mohan G. "Antiinflammatory and analgesic activity of Butea monosperma (Lam) stem bark in experimental animals". Pharmacologyonline 2. (2007): 88-94.
55. Bhatwadekar AD., et al. "Antistress activity of Butea monosperma flowers". Indian Journal of Pharmacology 31.2 (1999): 153.
56. Panda S., et al. "Thyroid inhibitory, antiperoxidative and hypoglycemic effects of stigmasterol isolated from Butea monosperma". Fitoterapia 80.2 (2009): 123-126.
57. Bandara BR., et al. "An antifungal constituent from the stem bark of Butea monosperma". Journal of Ethnopharmacology 25.1 (1989): 73-75.
58. Surin WR and Ananthaswamy K. "Recent advances on the pharmacological profile of Butea monosperma". GEF Bulletin of Biosciences 2. (2011): 33-40.
59. Naeem F and Khan SH. "Evaluation of Hypoglycemic and Hypolipidemic Activity of Butea monosperma Fruit in Diabetic Human Subjects". Turkish Journal of Biology 34. (2010): 189- 197.
60. Thorat R., et al. "Antidiabetic activity of HF on alloxan induced diabetic rats". Pharmacologyonline. 4.2 (2010): 1089-1099.
61. Permender R., et al. "Antidiabetic potential of Fabaceae family: An overview". Current Nutrition and Food Science 6.3 (2010): 161-175.
62. Shukla YN., et al. "Antimicrobial activity of Butea monosperma". Indian Drugs 38. (2001): 49-50.
63. Sahu MC and Padhy RN. "In vitro antibacterial potency of Butea monosperma Lam. against 12 clinically isolated multidrug resistant bacteria". Asian Pacific Journal of Tropical Disease 3.3 (2013): 217-226.
64. Mendhe BB., et al. "Evaluation of Anthelmintic activity of leaf extracts of Butea Monosperma". International Journal of Pharmaceutical Sciences and Research 1.3 (2011): 69-72.
65. <https://m.netmeds.com..>